

SHOP SUPPLIES & EQUIPMENT

Essential Components for Everyday Operations

From casters and wheels to bearings, jacks, and fasteners, this category supports a wide range of shop needs and repair tasks. Each product is selected for durability, functionality, and ease of integration—whether it's for replacing worn components, optimizing workspace mobility, or keeping essential hardware on hand.





2 Ton Hydraulic Floor Jack.....	342
2 Ton Scissor Jack	342
3 Ton Heavy Duty Jack Stand Double Locking.....	343
3 Ton Low Profile Hydraulic Floor Jack.....	342
5-Tine Forged Manure Fork with Wood Handle, Steel D-Grip	350
6-Tine Forged Manure Fork with Wood Handle.....	350
14-Tine Steel Rake with Wood Handle.....	350
16 L Stainless Steel Industrial Sprayer	348
20 Ton Pneumatic/Hydraulic Bottle Jack	343
30-Tine Poly Leaf Rake with Wood Handle (Large).....	350

A

Air Hose Reels - Heavy Duty Steel Frame	338
Aluminum Barn Scoop #12 with Wood Handle	349
Aluminum Butyl Tape	346
Aluminum Foil Tape.....	346
Aluminum Grain Scoop #10 with Wood Handle, Steel D-Grip	349
Anti-Slip Grit Tape.....	347

B

Battery Terminal Cleaner Brush	345
--------------------------------------	------------

C

Caster Swivel Wheels	340
Caster & Wheels Plan-O-Gram	337
Caster Wheels With Rigid Top Plate.....	340
Caster Wheel With Side Locking Brake	340
Convertible Mechanic Creeper/Stool.....	342
Custom Bulk Bin Features	351

D

Detachable Vehicle Ramp	345
Double Sided Mounting Tape.....	347
Duct Tape.....	347
Dynaline Bin Box.....	352

F

Flat Free Caster Swivel Wheel.....	341
Flat Free Caster Wheel With Rigid Top Plate	341
Flat Free Wheels	339

G

Garage Parking Stops.....	345
---------------------------	------------

H

Handheld Pressure Sprayer	348
Handheld Sprayer.....	348
HPLV Spray Gun (High Pressure Low Volume)	349
Hydraulic Bottle Jacks	343

I

Industrial Hose Reel.....	338
---------------------------	------------

L

Low Profile Vehicle Ramp.....	345
-------------------------------	------------

N

Nano Double Sided Gel Tape.....	346
---------------------------------	------------

P

Pick Mattock 5 lb, 36" Long Fiberglass Handle	350
Plastic Cover and Index Label.....	351
Plastic Hub Wheel	339
Pneumatic Caster Swivel Wheel.....	341
Pneumatic Caster Wheel With Rigid Top Plate	341
Pneumatic Wheels.....	339

R

Replacement Bearings for Wheels	339
Replacement Parts for 16 L Stainless Steel Industrial Sprayer.....	348
Replacement Parts for Handheld Pressure Sprayers	348
Replacement Parts for Hose Reels.....	338
Retractable Hose Reel - Silver Series.....	338
Round-Point Shovels.....	349

S

Shop Towels	344
Silicone Self-Fusing Tape	347
Small Wheel Rack Merchandiser.....	337
Square-Point Shovels	349
Stackable Vehicle Ramp	345
Storage Bins.....	351

T

Tilt Bins.....	352
Tire Dolly.....	344
Tire Racking Dolly.....	344

U

Utility Farm Jack Maintenance Kit	343
Utility Farm Jacks	343

V

Vinyl Hazard Tape.....	346
------------------------	------------

W

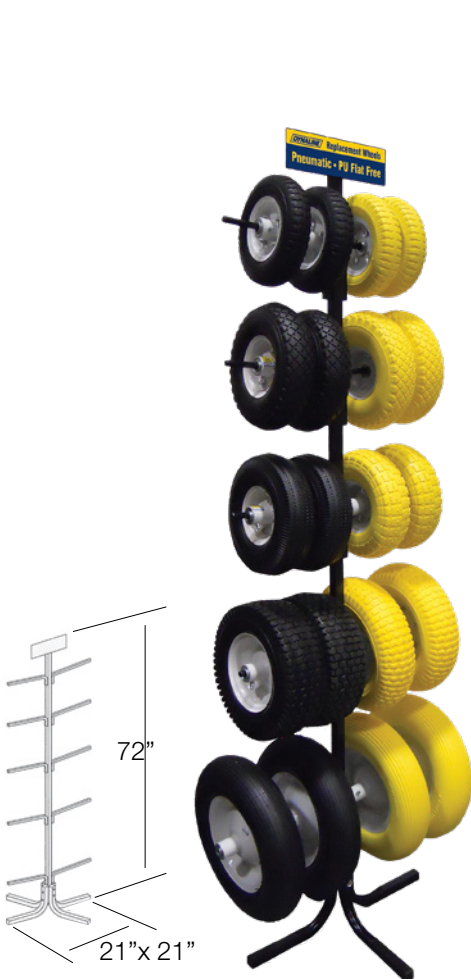
Wall-Mount Folding Tire Rack	344
Waterproof Patch & Seal Tape	346
Wheels & Casters Gondola.....	337





Dynaline Shop Supplies & Equipment Merchandisers

Dynaline offers merchandisers for almost every product. Merchandisers keep your stock organized, visible and easy to shop.



Small Wheel Rack Merchandiser

PART #	CONTENTS
80103K	Full Wheel Rack Merchandiser
Full Product Breakdown on Page 87	



Caster & Wheels Plan-O-Gram

PART #	CONTENTS
00300K	Full Caster Wheels Plan-O-Gram
00302K	Full Caster & Assorted Wheels Plan-O-Gram
Full Product Breakdown on Pages 87 and 88	



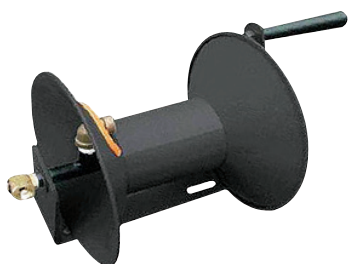
Wheels & Casters Gondola

PART #	CONTENTS
00302K-G	Wheels & Casters Gondola
Full Product Breakdown on Pages 86	



Sizes are approximate. Specifications subject to change without notice.





Air Hose Reels - Heavy Duty Steel Frame

Corrosion resistant powder coat finish. Features spring tension brake and solid brass swivel. Mounts on floor, wall or workbench.

PART #	REEL CAPACITY	HOSE DIAMETER	INLET DIAMETER	HOUSE OUTLET
11362	100 ft.	3/8"	3/8" NPT	3/8" NPT
11363	50 ft.	3/8"	3/8" NPT	3/8" NPT



Industrial Hose Reel

Heavy duty steel assembly. Corrosion resistant powder coated finish. Ratchet gear locks reel at desired hose length. 3/8" heavy duty industrial grade rubber hose. Use for air and water, 3/8" NPT brass fitting.

PART #	HOSE LENGTH	HOSE DIAMETER	MAXIMUM PRESSURE	COLOUR
11369	50 ft.	3/8"	300 PSI	Red
11371	100 ft.	3/8"	300 PSI	Black & Yellow



Retractable Hose Reel - Silver Series

Auto rewind, heavy duty steel assembly. Powder coated finish. Self locking mechanism, heavy duty springs. Robust for commercial use. Industrial grade hose for water, oil and air.

PART #	HOSE LENGTH	HOSE DIAMETER	MAXIMUM PRESSURE
11360	50 ft.	3/8"	300 PSI
11361	50 ft.	1/2"	300 PSI

Replacement Parts for Hose Reels

PART #	DESCRIPTION	FOR SERIES
11369-1	3/8" Hose Stopper	11360, 11369, 11371
11361-1	1/2" Hose Stopper	11361
11369-2	4-Way Roller Bracket Assembly	11369
11371-1	4-Way Roller Bracket Assembly	11371
11360-1	4-Way Roller Bracket Assembly	11360
11369-3	1/4" FNPT Swivel	11369, 11371

PART #	DESCRIPTION	FOR SERIES
11362-1	3/8" FNPT Swivel	11362, 11363
11359-3	1/4" FNPT Swivel	11360
11361-2	1/2" FNPT Swivel	11361
11369-4	Ld Locking Pawl Accessory	11369
11371-2	Ld Locking Pawl Accessory	11371
11359-4	Hd Locking Pawl Accessory	11360, 11361

Sizes are approximate. Specifications subject to change without notice.





Pneumatic Wheels

Rugged steel construction. Proof tested & certified. Use on straight or curved tracks. Adjustable to various beams. Axle bore is 5/8" (except Part # 80117 which has an axle bore of 3/4"). Tube tires.

PART #	TIRE SIZE	HUB WIDTH	WHEEL DIAMETER	TIRE WIDTH	RIM DIAMETER	HUB TYPE	TREAD PATTERN	LOAD RATING
80101	2.50-4	1.75"	8.5"	2.275"	4.8"	Offset	Lug	180 lb
80105	4.10/3.50-4	2.28"	10"	3.25"	4.9"	Offset	Sawtooth	280 lb
80109	3.00-4	1.53"	10"	3"	4.8"	Offset	Diamond	260 lb
80113	5.00-6	3.15"	13"	4.45"	6.79"	Offset	Turf	390 lb
80116	4.80/4.00-8	5.98"	15.08"	3.66"	8.8"	Center	Line	390 lb
80117	4.80/4.00-8	5.98"	15.08"	3.66"	8.8"	Center	Line	390 lb



Flat Free Wheels

Axle bore size is 5/8". Steel rims. Tubeless. Comes with bearings and grease zerks. 100% Polyurethane (PU) foam.

PART #	TIRE SIZE	HUB WIDTH	WHEEL DIAMETER	TIRE WIDTH	RIM DIAMETER	HUB TYPE	TREAD PATTERN	LOAD RATING
80102	2.50-4	1.75"	8.5"	2.275"	4.8"	Offset	Lug	160 lb
80107	4.10/3.50-4	2.28"	10"	3.25"	4.9"	Offset	Sawtooth	260 lb
80111	3.00-4	1.53"	10"	3"	4.8"	Offset	Diamond	240 lb
80112	3.00-4	2.59"	10"	3"	4.8"	Center	Diamond	240 lb
80115	5.00-6	3.15"	13"	4.45"	6.79"	Offset	Turf	370 lb
80118	4.80/4.00-8	5.98"	15"	3.66"	8.8"	Center	Line	370 lb



Plastic Hub Wheel

Semi-pneumatic wheel with a durable plastic lightweight rim and hub. Axle bore size is 1/2".

PART #	TIRE SIZE	HUB WIDTH	WHEEL DIAMETER	TIRE WIDTH	RIM DIAMETER	HUB TYPE	TREAD PATTERN	LOAD RATING
80229	4.10/3.50-4	2.28"	10"	3.25"	4.67"	Offset	Jag	260 lb



Replacement Bearings for Wheels

PART #	AXLE BORE DIAMETER	OUTSIDE DIAMETER
80121	5/8"	1-15/32"
80122	1/2"	1-15/32"
80123	3/4"	1-15/32"



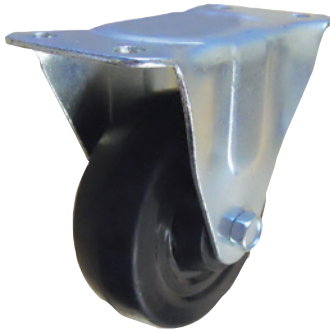
Sizes are approximate. Specifications subject to change without notice.





Caster Wheels With Rigid Top Plate

For general use in hardware, factory and warehouse. Strong, durable, economical. Corrosion resistant zinc finish. Hard rubber wheels, black.



PART #	WHEEL DIAMETER	WHEEL WIDTH	OVERALL HEIGHT	AXLE SIZE	MOUNTING HOLE DIAMETER	LOAD RATING (LB)	PLATE SIZE (INCHES)
31015	1-1/2"	7/8"	2"	1/4"	1/4"	77 lb	2-3/8" x 1-1/2"
31020	2"	1"	2-1/2"	1/4"	1/4"	110 lb	1-3/4" x 2-5/8"
31025	2-1/2"	1-1/8"	3-3/16"	5/16"	5/16"	165 lb	2-1/8" x 3-3/4"
31030	3"	1-1/4"	3-13/16"	3/8"	5/16"	210 lb	2-1/2" x 4"
31040	4"	1-5/16"	5"	7/16"	3/8"	240 lb	2-1/4" x 5"
31050	5"	1-1/4"	6-3/16"	3/8"	5/16"	220 lb	3-5/8" x 2-1/2"
31060	6"	2"	7-1/2"	15/32"	7/16"	660 lb	4-1/2" x 4"
31080	8"	2"	9-1/2"	15/32"	7/16"	700 lb	4-1/2" x 4"

Caster Swivel Wheels

For general use in hardware, factory and warehouse. Strong, durable, economical. Corrosion resistant zinc finish. Hard rubber wheels, black.



PART #	WHEEL DIAMETER	WHEEL WIDTH	OVERALL HEIGHT	AXLE SIZE	MOUNTING HOLE DIAMETER	LOAD RATING (LB)	PLATE SIZE (INCHES)
32015	1-1/2"	7/8"	2"	1/4"	1/4"	77 lb	2-3/8" x 1-3/4"
32020	2"	1"	2-1/2"	1/4"	1/4"	110 lb	1-7/8" x 2-9/16"
32025	2-1/2"	1-1/8"	3-3/16"	5/16"	5/16"	165 lb	2-3/4" x 3-13/16"
32030	3"	1-1/4"	3-13/16"	3/8"	5/16"	210 lb	3-1/8" x 4-1/8"
32040	4"	1-5/16"	5"	7/16"	3/8"	240 lb	4" x 5-1/8"
32050	5"	1-1/4"	6-3/16"	3/8"	5/16"	220 lb	3-5/8" x 2-1/2"
32060	6"	2"	7-1/2"	15/32"	7/16"	660 lb	4-1/2" x 4"
32080	8"	2"	9-1/2"	15/32"	7/16"	700 lb	4-1/2" x 4"

Caster Wheel With Side Locking Brake

For general use in hardware, factory and warehouse. Strong, durable, economical. Corrosion resistant zinc finish. Hard rubber wheels, black.



PART #	WHEEL DIAMETER	WHEEL WIDTH	OVERALL HEIGHT	AXLE SIZE	MOUNTING HOLE DIAMETER	LOAD RATING (LB)	PLATE SIZE (INCHES)
33015	1-1/2"	7/8"	2"	1/4"	1/4"	77 lb	2-3/8" x 1-3/4"
33020	2"	1"	2-1/2"	1/4"	1/4"	110 lb	1-7/8" x 2-9/16"
33025	2-1/2"	1-1/8"	3-3/16"	5/16"	5/16"	165 lb	2-3/4" x 3-13/16"
33030	3"	1-1/4"	3-13/16"	3/8"	5/16"	210 lb	3-1/8" x 4-1/8"
33040	4"	1-5/16"	5"	7/16"	3/8"	240 lb	4" x 5-1/8"
33050	5"	1-1/4"	6-3/16"	3/8"	5/16"	220 lb	3-5/8" x 2-1/2"
33060	6"	2"	7-1/2"	15/32"	7/16"	660 lb	4-1/2" x 4"
33080	8"	2"	9-1/2"	15/32"	7/16"	700 lb	4-1/2" x 4"

Sizes are approximate. Specifications subject to change without notice.





Pneumatic Caster Wheel With Rigid Top Plate

Rigid caster wheel with 4.10/3.50-4 pneumatic tube tire. 50 PSI, 4-ply sawtooth tread. 3-piece split 1.8mm rim with curled edges. 4" centered hub with valve stem and grease fitting on same side of rim. 5/8" precision ball bearing. Frame thickness is 5.5 mm.



PART #	WHEEL DIAMETER	WHEEL WIDTH	OVERALL HEIGHT	AXLE SIZE	MOUNTING HOLE DIAMETER	LOAD RATING (LB)	PLATE SIZE (INCHES)
31100	10"	3-3/8"	12"	5/8"	7/16"	500 lb	4" x 4-1/2"

Pneumatic Caster Swivel Wheel

Swivel caster wheel with 4.10/3.50-4 pneumatic tube tire. Premium 50 PSI, 4-ply sawtooth tread. 3-piece split 1.8mm rim with curled edges. 4" centered hub with valve stem and grease fitting on same side of rim. 5/8" precision ball bearing. Frame thickness is 5.5 mm.



PART #	WHEEL DIAMETER	WHEEL WIDTH	OVERALL HEIGHT	AXLE SIZE	MOUNTING HOLE DIAMETER	LOAD RATING (LB)	PLATE SIZE (INCHES)
31101	10"	3-3/8"	12"	5/8"	7/16"	500 lb	4" x 4-1/2"

Flat Free Caster Wheel With Rigid Top Plate

Rigid caster wheel with flat free tire. 1.8 mm rim, 5/8" ball bearing.



PART #	WHEEL DIAMETER	WHEEL WIDTH	OVERALL HEIGHT	AXLE SIZE	MOUNTING HOLE DIAMETER	LOAD RATING (LB)	PLATE SIZE (INCHES)
31102	10"	3-3/8"	12"	5/8"	7/16"	360 lb	4" x 4-1/2"

Flat Free Caster Swivel Wheel

Swivel caster wheel with flat free tire. 1.8 mm rim, 5/8" ball bearing.



PART #	WHEEL DIAMETER	WHEEL WIDTH	OVERALL HEIGHT	AXLE SIZE	MOUNTING HOLE DIAMETER	LOAD RATING (LB)	PLATE SIZE (INCHES)
31103	10"	3-3/8"	12"	5/8"	7/16"	360 lb	4" x 4-1/2"

Sizes are approximate. Specifications subject to change without notice.





Convertible Mechanic Creeper/Stool

Converts easily from creeper to stool. Sturdy and durable pipe frame. Thick padded vinyl cushions for maximum comfort. Equipped with 6 casters for increase mobility.

PART #	CAPACITY
11575	300 lb



2 Ton Scissor Jack

Saddle top type, collapsible, steel scissor jack. Meets ASME 2014 safety standards.

PART #	CAPACITY	LIFTING RANGE
11557	4,000 lb	4-1/8" to 15-3/8"



2 Ton Hydraulic Floor Jack

This jack features a safety overload system to prevent use beyond rated capacity. Rotating heavy duty saddle. Meets ASME 2014 safety standards. Built in carrying handle.

PART #	CAPACITY	LIFTING RANGE
11558	4,000 lb	5-5/16" TO 13-3/16"



3 Ton Low Profile Hydraulic Floor Jack

This jack features a safety overload system to prevent use beyond rated capacity. Rotating Heavy Duty Saddle and dual piston for quick lift pump. Meets ASME 2014 safety standards.

PART #	CAPACITY	LIFTING RANGE
11559	2-15/16" to 19-11/16"	6,000 lb

Sizes are approximate. Specifications subject to change without notice.





3 Ton Heavy Duty Jack Stand Double Locking

Heavy duty steel, meets ASME 2014 safety standard. Features a double-lock protection and a large saddle surface area. Self locking, multi-position, forged iron ratcheted bar. 2 per box.

PART #	CAPACITY	LIFTING RANGE
11570	6,000 lb	10-7/16" TO 16-3/4"



Hydraulic Bottle Jacks

Made of dropped forged alloy steel and red powder coated finish. These jacks are designed for residential and commercial use. Features a serrated heat treated saddle and an adjustable screw top extension. Meets ASME 2014 safety standards.

PART #	CAPACITY	LIFTING RANGE	TON
11551	4,000 lb	6-7/32" TO 12-1/8"	2T
11552	5,000 lb	7-3/32" to 13-3/4"	1.5T
11553	12,000 lb	7-3/4" to 15-3/64"	6T
11555	40,000 lb	9-5/8" to 17-11/16"	2T
11554	24,000 lb	5-1/8" TO 40"	20T



20 Ton Pneumatic/Hydraulic Bottle Jack

Drop forged alloyed steel construction, red powder coated. Manual or air operation. Designed for heavy commercial use. 100 to 120 psi pressure rating. Serrated heat treated saddle. Adjustable screw top extension. Air valve with integrated filter, seal hydraulic unit. Meets ASME 2014 safety standards.

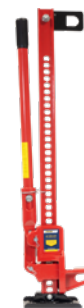
PART #	CAPACITY	LIFTING RANGE	TON
11556	40,000 lb	10-7/32" to 20-3/32"	20 Ton



Utility Farm Jacks

Made of heavy duty steel and a red powder coated finish. This jack can be used horizontally or vertically in any application requiring lifting, pulling, clamping, winching and spreading. Meets ASME B30.1 safety standard.

PART #	CAPACITY	LIFTING RANGE	TON
11572	7,000 lb	5-1/8" TO 28-11/32"	36"
11573	8,000 lb	5-1/8" TO 40"	48"



11574

Utility Farm Jack Maintenance Kit

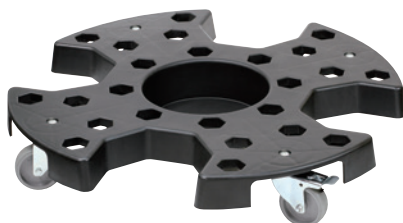
Universal farm jack maintenance kit for 11572 & 11573.



11574

Sizes are approximate. Specifications subject to change without notice.





Tire Dolly

This dolly is made of durable polypropylene. It features non-marking thermoplastic swivel casters to make moving tires around the shop or garage much easier.

PART #	CAPACITY	SIZE
11388	300 lb	26" x 26" x 4.3"



Tire Racking Dolly

This tire rack dolly will help to store and move tires around a shop effortlessly. Built with 4 swivel casters with one featuring a locking break mechanism to prevent it from rolling away. Built to prevent tire distortion, it features rim protecting supports to accommodate tires up to 8.8" wide.

PART #	CAPACITY	CAPACITY PER LEVEL
11389	220 lb	55 lb



Wall-Mount Folding Tire Rack

This red, wall-mounted tire rack will easily accommodate standard tires. It is made of heavy duty steel to ensure longevity.

PART #	CAPACITY	SIZE
11390	300 lb	Adjustable Width from 32" to 48", 22" Long x 20"



Shop Towels

Bundle of 6 wrapped red towels. Each towel is 13" x 14".

PART #	COLOUR	PIECES / BUNDLE
51395	Red	6 Pieces

Sizes are approximate. Specifications subject to change without notice.





Battery Terminal Cleaner Brush

PART #	DESCRIPTION	DISPLAY BOX QTY
11128	<ul style="list-style-type: none"> Internal and external wire brushes built into the rugged steel case External brush for cleaning cable clamps, internal brush for posts 	18



Low Profile Vehicle Ramp

Made of high impact plastic, rust proof and durable. 20,000 Lbs gross vehicle weight. 2 Per box.

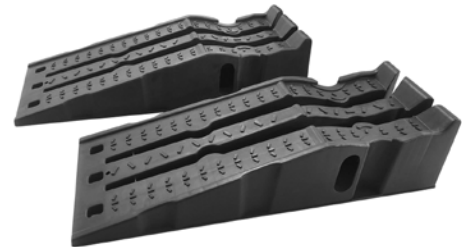
PART #	LIFT HEIGHT	DIMENSIONS	INCLINE DEGREE	CAPACITY / RAMP
11380	27.5" x 8" x 3.1"	2.5"	9	5,000 lb



Stackable Vehicle Ramp

Curve cradle platform to keep the wheels in position. Non-skid tread pattern design - increases traction and reduces shifting. Made of high impact plastic, rust proof and durable. 16,000 lb gross vehicle weight. 2 per box.

PART #	LIFT HEIGHT	DIMENSIONS	INCLINE DEGREE	CAPACITY / RAMP
11381	35.6" x 13" x 8.5"	6.1"	17	4,000 lb



Detachable Vehicle Ramp

Features a detachable incline design to accommodate for bigger working space or for adding a jack for extra safety. Made of high impact plastic, rust proof and durable. Comes with 6 rubber pads on each section for maximum grip. 13,000 lb gross vehicle weight. 2 per box.

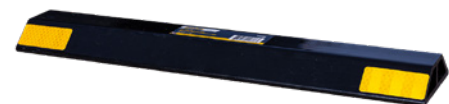
PART #	LIFT HEIGHT	DIMENSIONS	INCLINE DEGREE	CAPACITY / RAMP
11382	6" x 15" x 8.3"	6.3"	9.5	3,250 lb



Garage Parking Stops

Features a peel and stick design with Styrofoam film on the back. Easy to install, no need for drilling. Made of environmentally friendly material. Highly visible yellow safety stripes to improve visibility.

PART #	SIZE
11386	18" x 3.5" x 1.3"
11387	18" x 3.8" x 1.8"



Sizes are approximate. Specifications subject to change without notice.





Waterproof Patch & Seal Tape

Waterproof patch and seal tape used to repair and surfaces that has a leak or puncture. Seals off gaps to prevent further leaks. Works in all weather conditions and under water.

PART #	DIMENSIONS
82100	4" x 5'



Nano Double Sided Gel Tape

Nano gel technology allows for a non-adhesive and reusable mounting option on multi-surfaces. Mounting does not damage surface after removal. Quick and easy use for mounting lighter objects.

PART #	DIMENSIONS	CAPACITY
82105	1.18" x 10'	2.2 lb



Aluminum Foil Tape

Used in high temperature environments to seal and repair HVAC systems. High fire resistant properties to protect surfaces from heat.

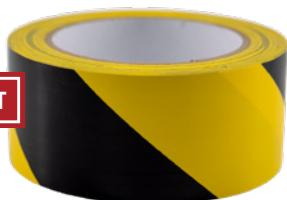
PART #	DIMENSIONS	SERVICE TEMPERATURE	APPLICATION TEMPERATURE	FLAME RATING
82106	2" x 33'	-10°C to 120°C	5°C to 40°C	HB



Aluminum Butyl Tape

Used for extreme outdoor repairs. Aluminum backing adds element and weather resistant. Butyl material creates a high adhesion bond for repairs.

PART #	DIMENSIONS	SERVICE TEMPERATURE	APPLICATION TEMPERATURE	WATERPROOF RATING
82107	2" x 16.4'	-17°C to 70°C	5°C to 40°C	IPX7



Vinyl Hazard Tape

Safety marking tape used on surfaces to create high visibility areas. Strong durable material and spill & scratch resistant. Works indoors and outdoors.

PART #	DIMENSIONS
82108	2" x 108'

Sizes are approximate. Specifications subject to change without notice.





Anti-Slip Grit Tape

Adds an area of grip to prevent slipping. Colours provide high visibility for additional safety/warning. Durable material to survive all conditions inside & outside.

PART #	DIMENSIONS
82116	2" x 16.4'



Duct Tape

General purpose use tape. Can seal, repair, and attach objects and surfaces. Easy tear design for quick and efficient uses. Works for indoor and outdoor use cases.

PART #	DIMENSIONS
82120	2" x 82'



Double Sided Mounting Tape

Used to mount objects to an area or stick two object surfaces together. Can be used on different types of surfaces, indoors & outdoors. Great for non-puncture mounting.

PART #	DIMENSIONS	CAPACITY
82126	1" x 5'	30 lb



Silicone Self-Fusing Tape

Used for non-adhesive repairs with self fusing seal. Ultra durable with high heat and pressure resistance for pipes and tanks.

PART #	DIMENSIONS	INSULATION	HIGH PRESSURE RATED
82130	1" x 10'	15-20 kV/mm	1 - 3Mpa



Sizes are approximate. Specifications subject to change without notice.





Handheld Sprayer

- Lightweight and Easy to Use
- Handle Action Pump
- Brass Conical Spray Tip
- Large Mouth for Easy Filling
- Lockable Handle for Continuous Spray
- Ergonomic Handle

PART #	CAPACITY
40020	1 L
40021	2 L



Handheld Pressure Sprayer

- Serviceable Lance
- Lance Clip
- Air Bleeder Valve
- Impact Resistant Polymer
- Commercial Grade Buna Seals
- Adjustable Carry Straps
- Ergonomic Handle
- Wide Mouth for Easy Filling
- Fully Adjustable Nozzle & Trigger Lock

PART #	CAPACITY
40022	6 L
40023	8 L
40027	4 L

Replacement Parts for Handheld Pressure Sprayers

For 40022 & 40023

PART #	DESCRIPTION
40024	Replacement Seal Kit
40025	Replacement Trigger and Hose
40026	Replacement Lance



16 L Stainless Steel Industrial Sprayer

PART #	DESCRIPTION
40028	<ul style="list-style-type: none"> • Viton seal material, brass tip nozzle and stainless steel tank and wand • Total Volume 20L/ Working Volume 16L • Features 2 carry on straps for single and double shoulder • 47" PVC Hose • Max working pressure 4 PSI • Comes with a pressure gauge • 8.3" tank diameter/ 1.5" filling mouth diameter

Replacement Parts for 16 L Stainless Steel Industrial Sprayer

For 40028

PART #	DESCRIPTION
40028-1	Sprayer Seals Kit - Replacement for 40028
40028-2	Replacement Pressure Gauge for 40028
40028-3	Replacement Hose for 40028
40028-4	Replacement Spray Gun for 40028
40028-6	Replacement Wand for 40028

Sizes are approximate. Specifications subject to change without notice.





HPLV Spray Gun (High Pressure Low Volume)

PART #	AIR PRESSURE	AIR CONSUMPTION	SPRAY HEAD AND NEEDLE	CUP CAPACITY	AIR INLET
19418	50 - 60 psi	5 - 10 CFM	1.8 mm	1000 ml	1/4"



Round-Point Shovels

Crafted from heat-treated 50Mn steel and finished with a black powder coating, it offers exceptional strength and rust resistance—perfect for digging and landscaping.

PART #	HANDLE	LENGTH	HEAD DIMENSIONS	D-GRIP
40050	Wooden	59"	8.3" W x 10.6" L x 1.6 mm Thickness	—
40052	Wooden	41.7"	8.7" W x 11.4" L x 1.8 mm Thickness	Steel
40054	Fiberglass	40.5"	8.7" W x 10.6" L x 1.6 mm Thickness	Polypropylene



Square-Point Shovels

Crafted from heat-treated 50Mn steel and finished with a black powder coating, it offers exceptional strength and rust resistance—perfect for digging and landscaping.

PART #	HANDLE	LENGTH	HEAD DIMENSIONS	D-GRIP
40051	Wooden	59"	8.7"W x 10.6"L x 1.6mm thickness	--
40053	Wooden	41.7"	9"W x 11.4"L x 1.8mm thickness	Steel
40055	Fiberglass	40.5"	8.3"W x 10.6"L x 1.6mm thickness	Polypropylene



Aluminum Barn Scoop #12 with Wood Handle

Lightweight aluminum scoop shovel with a comfortable wooden handle, ideal for moving grain, snow, mulch, or other loose materials. Durable aluminum head for efficient scooping and transporting.

PART #	HEAD DIMENSIONS
40060	10.4"W x 13.4"L



Aluminum Grain Scoop #10 with Wood Handle, Steel D-Grip

Sturdy aluminum scoop shovel featuring a reinforced steel collar for added durability and a comfortable wooden handle. Large head for efficiently handling snow, grain, mulch, and bulk materials.

PART #	HEAD DIMENSIONS
40061	13.6"W x 17"L



Sizes are approximate. Specifications subject to change without notice.





30-Tine Poly Leaf Rake with Wood Handle (Large)

Durable and lightweight plastic rake with 30 tines designed for effective leaf and lawn debris removal. Features a sturdy wooden handle, making it a versatile gardening tool for maintaining clean yards and gardens.

PART #	HEAD DIMENSIONS
40064	32.8" W x 26.8" L



14-Tine Steel Rake with Wood Handle

Strong steel rake with 14 durable tines, black powder-coated for superior rust resistance. Ideal for loosening soil, removing weeds, and general garden maintenance, featuring a comfortable wooden handle for easy use.

PART #	HEAD DIMENSIONS
40065	14" W x 4" L



6-Tine Forged Manure Fork with Wood Handle

Heavy-duty forged manure fork with 6 robust steel tines and a comfortable wooden handle. Black powder-coated finish enhances durability, perfect for moving manure, hay, straw, or garden debris

PART #	HEAD DIMENSIONS
40066	10" W x 13.5" L



5-Tine Forged Manure Fork with Wood Handle, Steel D-Grip

Reliable 5-tine forged manure fork featuring durable forged steel construction with a protective black powder-coated finish. Wooden handle ensures a comfortable grip for efficient handling of manure, compost, and garden materials.

PART #	HEAD DIMENSIONS
40067	9" W x 13" L



Pick Mattock 5 lb, 36" Long Fiberglass Handle

Versatile pick mattock with a shock-absorbing fiberglass handle in blue. Designed for breaking soil, cutting roots, digging, and landscaping tasks, providing excellent control and durability.

PART #	HEAD WEIGHT	LENGTH
40070	5 lb	36"

Sizes are approximate. Specifications subject to change without notice.



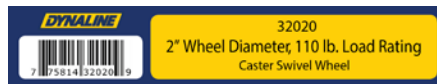


Storage Bins

PART #	LENGTH	WIDTH	HEIGHT	WEIGHT CAPACITY	CARTON QTY
HB1218	7-1/16"	4-3/4"	3-5/16"	3 kg	60
HB1525	10"	5-7/8"	4-3/4"	6 kg	36
HB2035	13-3/4"	8-1/16"	5-7/8"	20 kg	16
HB2045	18-7/8"	7-7/8"	7"	30 kg	12
HB3045	18-7/8"	11-3/4"	7"	50 kg	12



Custom Bulk Bin Features



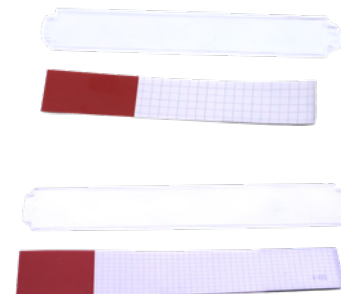
Once a product category or layout is determined, Dynaline will assemble your custom merchandiser and determine how many products it will need. We offer multiple bin sizes to ensure all your product will fit and look presentable to your valued customers.

Dynaline will print out any labels you need for your custom merchandiser. We will also print merchandiser headers for your display giving your customers confidence that the products you offer are provided by the trusted Dynaline brand.

We will ship all the bins you need including riser pins so your customers have easy access to your products. All bin sizes have corresponding risers so you aren't limited in your selection.

Plastic Cover and Index Label

PART #	CONTENTS
HBPC-S	Plastic Cover for Blue Bins - HB1218 & HB1525
HBPC-L	Plastic Cover for Blue Bins - HB2035, HB2045 & HB3045
HBIL-S	Index Labels for Blue Bins - HB1218 & HB1525
HBIL-L	Index Label for Blue Bins - HB2035, HB2045 & HB3045



Sizes are approximate. Specifications subject to change without notice.





Shop Supplies & Equipment

Tilt Bins • Dynaline Bin Box

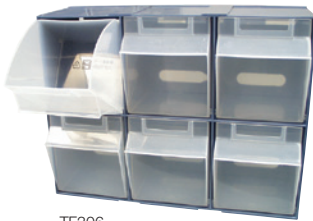


Shop Supplies & Equipment

Tilt Bins

- Easy multi-purpose storage solution.
- Functional design allows them to be stacked, screwed to a wall, or attached to a display unit.
- Sections interlock to form a rigid storage solution.
- Supplied with fastening screws and pegs. Easy multi-purpose storage solution.

PART #	COMPARTMENT QTY	WIDTH	DEPTH	HEIGHT	MAXIMUM WEIGHT
TF306	6 (3 Wide & 2 High)	11-13/16"	3-5/8"	9"	15 kg
TF308	8 (4 Wide & 2 High)	11-13/16"	2-1/2"	6-5/8"1	5 kg
TF604	4 (4 Wide)	23-5/8"	6-5/8"	8-3/16"	30 kg
TF605	5 (5 Wide)	23-5/8"	5-1/4"	6-1/2"	20 kg



TF306



TF308



TF604



TF605



Dynaline Bin Box

PART #	CONTENTS
00007	A Great Way to Organize Small Parts. Corrugated Card-Board Box with Dividers. Dimensions: 11-11/16" L x 4-7/8" W x 3-13/16" H.

Sizes are approximate. Specifications subject to change without notice.

