

TRAILER & TOWING

Engineered for Hauling Confidence

From heavy-duty pintle hooks to hitch accessories and jacks, this category supports secure and efficient towing operations. Every product is built with reliability and safety in mind, helping operators move cargo with peace of mind and consistent performance.

TOW-PRO™



Trailer & Towing

Table of Contents



- 2 Way Flat Connector 197
- 4-Hole Mounting Lunette Ring 196
- 4 Pole Flat Connectors 197
- 4 Pole Flat Loop Trailer Connector HD 197
- 4 Pole Round Plug & Socket 197
- 4 Way Flat Tester With LEDs..... 199
- 5 Pole Flat Connectors 198
- 6 Way Round Plug & Socket 198
- 7 Way Blade Plug 198
- 7 Way Blade Tester with LEDs..... 200
- 7 Way Plug 198, 199
- 7 Way Plug and Socket 198
- 7 Way Plug - Heavy Duty..... 199
- 7 Way Socket 198, 199
- 7 Way Socket / 4-Way Plug Set..... 199
- 7 Way Socket - Heavy Duty..... 199

A

- Adjustable 3-Position Lunette Ring 196
- Adjustable Aluminum Double Ball Mount..... 193
- Adjustable Ball Mount..... 193
- Adjustable Ball Mount (Single Platform) 193
- Adjustable Brackets 186
- Adjustable Double Forged Ball Mount 193
- Adjustable Trailer Couplers..... 186
- Adjustable Triple Ball Mount 193
- A-Frame Trailer Couplers..... 185
- Aluminum Document Holder 197

B

- Ball Mount Kits 191
- Ball Mount Measurements..... 190
- Ball Mount Rack..... 182
- Bent Pull Pin With Sleeve..... 188
- Breakaway Switch with Lanyard..... 200

C

- Channel Trailer Couplers 185
- Class 1 Ball Mounts..... 190
- Class 3-4 Ball Mounts 190
- Class 4 Forged Steel Ball Mounts..... 190
- Class 5 Forged Steel Ball Mounts..... 191
- Clevis Ball Mount..... 192
- Combination Pintle Hooks - Class 5 195
- Combination Pintle Hooks Class 5 - 1 Piece, Solid Shank..... 196
- Coupler Lock..... 186

E

- External Thread Trailer Balls 183
- External Thread Trailer Balls - Retail Packaged 184
- Extra Lift External Thread Trailer Balls 183
- EZ-Clips..... 188

H

- Heavy Duty External Thread Trailer Balls 184
- Heavy Duty Polyfoam Wheel Chock..... 205
- Heavy Duty Trailer & RV Wheel Chock..... 189
- Hitch Adapters 194
- Hitch Box Extension 194
- Hitch Lock..... 187

I

- Internal Thread Trailer Balls..... 183
- Internal Thread Trailer Balls - Retail Packaged..... 184

J

- Jack Rack 182
- Jack Replacement Parts And Accessories..... 204

L

- Levelling Scissor Jack 204
- Lifter Coupler Handle 186
- Long Shank External Thread Trailer Balls 183

M

- Mount Fixed Lunette Ring 196
- Mounting Bracket For 7 Way Trailer Connectors 198
- Mud Flaps 206

P

- Pintle Hooks 195
- Pintle Hooks - Solid Shank..... 195
- Pintle Mounts 194
- Plastic Document Holders..... 196

R

- Receiver Lock Pins..... 187
- Receiver Pull Pins..... 188
- Receiver Tubes..... 194
- Reducer Sleeve Set..... 194
- Round Shank - Triple..... 191
- Round Tube Mount Jacks, Top Wind..... 202
- Round Tube Swivel Bracket Mount Jacks, Top Wind 202
- RV Bumper Receiver Adapter 2" 195





S	
Scissor Jack Drill Adapter.....	205
Shackle (Tow Strap) Ball Mount.....	192
Side Wind, Round Tube Mount (7-1/2" x 4" Base Plate)	202
Side Wind, Round Tube Mount (8" x 6" Base Plate).....	202
Side Wind, Square Tube Mount.....	203
Side Wind without Wheel	201
Side Wind with Wheel.....	201
Spring Latches	189
Square Drop Shank - Reversible	191
Square Shank - Triple Ball	192
Square Shank - Triple Ball with Tow Hook.....	192
Square Straight Shank - Reversible.....	192
Square Tube "Drop Legs" Jack	203
Square Tube "Drop Legs" Jack - Heavy Duty.....	204
Square Tube Trailer Jack	203
Super Duty Steel Ball Mounts.....	191
"Swing-Way" Jacks with Caster Wheels	200
T	
Top Wind, Square Tube Mount.....	203
Top Wind without Base or Wheel	201
Top Wind with Wheel.....	201
Trailer Ball Reducer Bushings.....	185
Trailer Ball Replacement Holder	184
Trailer Balls Display Board	182
Trailer Connector Adapters.....	199
Trailer Connectors Gondola.....	180
Trailer Coupler Repair Kits	185
Trailer Couplers Display Board	182
Trailer Dolly.....	206
Trailer Hitch Cover	206
Trailer Lock Kit.....	187
Trailer & Towing Gondola.....	180
Trailer & Towing Plan-O-Gram 48" x 48".....	181
Trailer & Towing Plan-O-Gram 48" x 72"	181
U	
Universal Trailer Coupler Locks	187
W	
Wheel Chocks.....	205
Wheel Chocks.....	205
Wheel Locks.....	189





Dynaline Trailer & Towing Merchandisers

Dynaline offers merchandisers for almost every product. Merchandisers keep your stock organized, visible and easy to shop.



Trailer & Towing Gondola

PART #	CONTENTS
00057K-G	Trailer & Towing Gondola. Measures 79" Tall x 49.6" Wide.

Full Product Breakdown on Page 27

Trailer Connectors Gondola

PART #	CONTENTS
01043K-G	Trailer Connectors Gondola. Measures 79" Tall x 49.6" Wide.

Full Product Breakdown on Page 25

Trailer & Towing Gondola

PART #	CONTENTS
01046K-G	Trailer & Towing Gondola. Measures 79" Tall x 49.6" Wide.

Full Product Breakdown on Page 26





Trailer & Towing Plan-O-Gram 48" X 72"

PART #	CONTENTS
00057K	Full Trailer & Towing Plan-O-Gram
	Full Product Breakdown on Page 29



Trailer & Towing Plan-O-Gram 48" x 48"

PART #	CONTENTS
01041K	Full Trailer & Towing Plan-O-Gram
	Full Product Breakdown on Page 30



Trailer & Towing Plan-O-Gram 48" x 48"

PART #	CONTENTS
01042K	Full Trailer Connectors Plan-O-Gram
	Full Product Breakdown on Page 31



Trailer & Towing Plan-O-Gram 48" x 72"

PART #	CONTENTS
01046K	Full Trailer & Towing Plan-O-Gram
	Full Product Breakdown on Page 32





✓ 00024 Compatible



✓ 00024 Compatible

Trailer Balls Display Board

PART #	CONTENTS
00208K	Full Trailer Balls Merchandiser
Full Product Breakdown on Page 28	

Trailer Couplers Display Board

PART #	CONTENTS
00215K	Full Trailer Couplers Merchandiser
Full Product Breakdown on Page 28	



Ball Mount Rack

PART #	CONTENTS
00210K	Full Ball Mount Rack Merchandiser
Full Product Breakdown on Page 33	



Jack Rack

PART #	CONTENTS
00637K	Full Jack Rack Merchandiser
Full Product Breakdown on Page 33	





Internal Thread Trailer Balls

Solid steel. Bright chrome plated finish. Meets or exceeds VESC V-5 safety specifications.

PART #	BALL DIAMETER	SHANK DIAMETER	SHANK LENGTH	GROSS LOAD RATING
11148	1-7/8"	3/4"	1-3/4"	2,000 lb
11149	2"	3/4"	1-3/4"	3,500 lb



External Thread Trailer Balls

Solid steel. Bright chrome plated finish. Meets or exceeds VESC V-5 safety specifications.

PART #	BALL DIAMETER	SHANK DIAMETER	SHANK LENGTH	GROSS LOAD RATING
11147	1-7/8"	1"	2-5/8"	3,500 lb
11151	1-7/8"	3/4"	1-1/2"	2,000 lb
11152	2"	3/4"	1-1/2"	3,500 lb
11153	2"	1"	2-5/8"	5,000 lb
11154	2-5/16"	1"	2-5/8"	5,000 lb
11155	2-5/16"	1-1/4"	2-5/8"	10,000 lb
11155H	2-5/16"	1-1/4"	2-1/4"	14,000 lb
11155X	2-5/16"	1-1/4"	2-5/8"	12,000 lb
11258	2"	1-1/4"	2-1/4"	8,000 lb



Long Shank External Thread Trailer Balls

Solid steel. Bright chrome plated finish. Meets or exceeds VESC V-5 safety specifications.

PART #	BALL DIAMETER	SHANK DIAMETER	SHANK LENGTH	GROSS LOAD RATING
11251	1-7/8"	3/4"	3-1/4"	2,000 lb
11252	2"	3/4"	3-1/4"	3,500 lb
11257	2"	1"	3-1/4"	5,000 lb
11263	2-5/16"	1"	3"	6,000 lb



Extra Lift External Thread Trailer Balls

Solid steel. Bright chrome plated finish. Meets or exceeds VESC V-5 safety specifications.

PART #	BALL DIAMETER	SHANK DIAMETER	SHANK LENGTH	RISE HEIGHT	GROSS LOAD RATING
11253	2"	1"	2-5/8"	1"	3,500 lb
11255	2-5/16"	1-1/4"	2-1/4"	1"	7,000 lb





Trailer & Towing

Trailer Balls (Retail Packaged) • Trailer Balls



Trailer & Towing



Heavy Duty External Thread Trailer Balls

Solid steel. Black powder coated finish. Meets or exceeds VESC V-5 safety specifications.

PART #	BALL DIAMETER	SHANK DIAMETER	SHANK LENGTH	RISE HEIGHT	GROSS LOAD RATING
11259	2-5/16"	1-1/4"	2-5/8"	Standard	30,000 lb
11260	2-5/16"	1-1/4"	2-5/8"	1"	30,000 lb
11261	2-5/16"	1-1/4"	2-1/2"	2"	30,000 lb



Internal Thread Trailer Balls - Retail Packaged

Solid steel. Bright chrome plated finish. Meets or exceeds VESC V-5 safety specifications.

PART #	BALL DIAMETER	SHANK DIAMETER	SHANK LENGTH	GROSS LOAD RATING
11148P	1-7/8"	3/4"	1-3/4"	2,000 lb
11149P	2"	3/4"	1-3/4"	3,500 lb



External Thread Trailer Balls - Retail Packaged

Solid steel. Bright chrome plated finish. Meets or exceeds VESC V-5 safety specifications.

PART #	BALL DIAMETER	SHANK DIAMETER	SHANK LENGTH	GROSS LOAD RATING
11147P	1-7/8"	1"	2-5/8"	3,500 lb
11151P	1-7/8"	3/4"	1-1/2"	2,000 lb
11152P	2"	3/4"	1-1/2"	3,500 lb
11153P	2"	1"	2-5/8"	5,000 lb
11154P	2-5/16"	1"	2-5/8"	5,000 lb
11155P	2-5/16"	1-1/4"	2-5/8"	10,000 lb
11155HP	2-5/16"	1-1/4"	2-1/4"	14,000 lb
11155XP	2-5/16"	1-1/4"	2-5/8"	12,000 lb
11251P	1-7/8"	3/4"	3-1/4"	2,000 lb
11252P	2"	3/4"	3-1/4"	3,500 lb



Trailer Ball Replacement Holder

Black plastic with generic label.

PART #	DESCRIPTION	FITS
TB001	Small - 6.89" x 2.28" x 2.52"	11148, 11149, 11151, 11152 (See previous page)
TB002	Large - 7.36" x 2.64" x 2.99"	11147, 11153, 11154, 11155, 11155H, 11155X (See previous page)





Trailer Ball Reducer Bushings

Clamshell packaged.

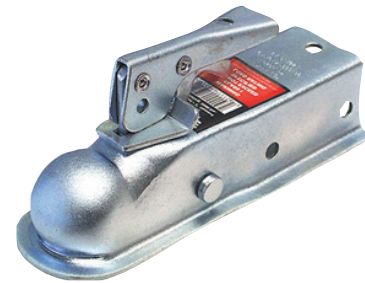
PART #	DESCRIPTION
11170	Reduces 1" to 3/4"
11171	Reduces 1-1/4" to 1"



Channel Trailer Couplers

Features large trigger-action latch designed for ease of operation. Zinc Plated Finish. Stamped steel construction. Easy to install. S.A.E. Class1-2.

PART #	BALL SIZE	CHANNEL SIZE	GROSS LOAD RATING
11156	1-7/8"	2"	2,000 lb
11157	1-7/8"	2-1/2"	2,000 lb
11158	1-7/8"	3"	2,000 lb
11159	2"	2-1/2"	3,500 lb
11159N	2"	2"	3,500 lb
11160	2"	3"	3,500 lb



A-Frame Trailer Couplers

Features large trigger-action latch designed for ease of operation. Zinc plated finish. Stamped steel construction. Easy to install. Overall width is 16-3/4". Length is 12-1/2" and height is 3-3/4". Class 3-4.

PART#	BALL SIZE	TYPE	GROSS LOAD RATING
11161	2"	Standard	5,000 lb
11162	2-5/16"	Standard	10,000 lb



Trailer Coupler Repair Kits

Zinc plated finish.

PART#	DESCRIPTION
11163	For 1-7/8" Ball Channel Coupler
11164	For 2" Ball Channel Coupler





Lifter Coupler Handle

For easy lifting of trailer tongue on small trailers (coupler not included).

PART#	DESCRIPTION
11870	Zinc Plated with Rubber Coating on the Handle. Handle Attaches to Coupler Mounting Bolts.



Adjustable Trailer Couplers

Carbon steel.

PART#	BALL SIZE	TONGUE WEIGHT	MAX. GROSS LOAD	OVERALL DIMENSIONS
11864	2"	800 lb	8,000 lb	9" L x 5-1/2" W
11865	2-5/16"	1,400 lb	14,000 lb	9-1/4" L x 5-3/4" W



Adjustable Brackets

Designed for adjustable couplers. (11864, 11865)

PART#	DESCRIPTION	HOLE DIAMETER	CAPACITY	OUTSIDE WIDTH	INSIDE WIDTH	OVERALL LENGTH
11866	12 Hole (6 Pairs)	5/8"	16,000 lb	3-5/8"	3"	11-1/2"
11867	8 Hole (4 Pairs)	5/8"	16,000 lb	3-5/8"	3"	7-1/2"



Coupler Lock

Fits all latch-type couplers. Two keys supplied. Yellow dichromate finish. Clamshell packaging.

PART#	DIAMETER	USABLE LENGTH
66276	1/4"	7/8" (Closed)





Coupler Lock & Receiving Set

Fits most receiver hitches and latch-type couplers. Same key fits both locks. Chrome plated. Clamshell packaging.



PART#	RECEIVER DIAMETER	RECEIVER USABLE LENGTH	LOCK	LOCK USABLE LENGTH
66277	5/8"	2-3/4"	1/4"	1"

Receiver Lock Pins

Two sizes to fit most receiver-type hitches. Two keys supplied. Bright chrome plated pin. Black enamel painted lock body.



PART #	DIAMETER	USABLE LENGTH	TENSILE STRENGTH
66274	1/2"	2-1/2"	5,500 lb
66275	5/8"	3"	8,800 lb

Hitch Lock

Chrome plated, weather proof cap. Clamshell packaged.



PART#	TYPE	DIAMETER	USABLE LENGTH
65091	Sleeved Barrel	5/8" or 1/2"	2-1/2"

Universal Trailer Coupler Locks

Bent at the perfect angle for easy removal. Made from oil tempered spring wire. Clear zinc plated finish. Features a locking bar with 6 locking positions.



PART#	DESCRIPTION
65085	Light Duty. Fits 1-7/8", 2" and 2-5/16" Couplers.
65086	Heavy Duty. Fits 1-7/8", 2" and 2-5/16" Couplers.

Trailer Lock Kit

Spring loaded bolt can be locked in the open position. Zinc plated bolt housing and keeper. Turning lever allows the bolt to close under spring pressure.



PART#	DESCRIPTION	CONTENTS
65087	Keyed alike	Light duty universal trailer coupler lock, brass coupler lock, dual bent pin hitch lock (fits 5/8 and 1/2 receivers)

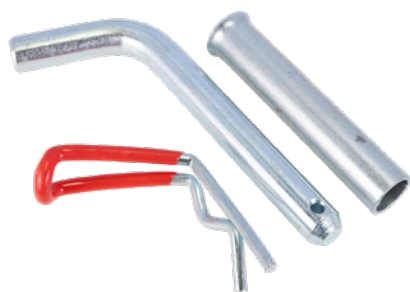




Receiver Pull Pins

For securing ball mounts to receiver-type hitches. Supplied with EZ clip.

PART #	MATERIAL	DIAMETER	USABLE LENGTH	CLIP TYPE
66267	Stainless Steel - Won't Rust!	1/2"	3"	Vinyl Coated Grip
66268	Stainless Steel - Won't Rust!	5/8"	3"	Vinyl Coated Grip
102281	High Carbon Steel, Zinc Plated.	3/8"	3"	Standard
102282	High Carbon Steel, Zinc Plated.	1/2"	2-1/2"	Standard
66270	High Carbon Steel, Zinc Plated.	1/2"	3"	Vinyl Coated Grip
102284	High Carbon Steel, Zinc Plated.	1/2"	4"	Standard
102285	High Carbon Steel, Zinc Plated.	1/2"	5"	Standard
66270P	As 66270, Carded.	1/2"	3"	Vinyl Coated Grip
66271	High Carbon Steel, Zinc Plated.	5/8"	3"	Vinyl Coated Grip
102287	High Carbon Steel, Zinc Plated.	5/8"	4"	Standard
102288	High Carbon Steel, Zinc Plated.	5/8"	5"	Standard
102289	High Carbon Steel, Zinc Plated.	3/4"	3-1/2"	Standard
102290	High Carbon Steel, Zinc Plated.	3/4"	4-1/2"	Standard
102291	High Carbon Steel, Zinc Plated.	3/4"	5"	Standard
66271P	As 66271, Carded.	5/8"	3"	Vinyl Coated Grip
66272	High Carbon Steel, Zinc Plated.	5/8"	3-1/2"	Vinyl Coated Grip



Bent Pull Pin With Sleeve

Chrome plated, weather proof cap. Clamshell packaged.

PART #	DESCRIPTION
66273	Fits 1/2" & 5/8", C-1018 Mild Steel Material. Zinc Plated Finish Comes with a Red Vinyl Coated Grip E-Z Clip.



EZ-Clips

Bent at the perfect angle for easy removal. Made from oil tempered spring wire. Clear zinc plated finish.

PART #	DESCRIPTION	WIRE DIAMETER	QTY
66265	Clear Zinc Plated Finish.	0.148"	25
66266	Vinyl Coated Non-Slip Grip.	0.148"	10
96266	Vinyl Coated Non-Slip Grip.	0.148"	2 (Blister Pack)





Heavy Duty Trailer & RV Wheel Chock

Made of heavy duty steel construction with corrosion resistant zinc plating. Fits tire spacing from 3" to 10". Includes a ratchet wrench (19mm) for easy installation and a padlock for extra security. Raised ribs on arms for increased traction.

PART #	SIZE
11989	15" x 9.5" x 10"



Wheel Locks

Adjustable slide-lock for wheels. Fits multiple tire sizes. Weather proof locks with 2 keys.

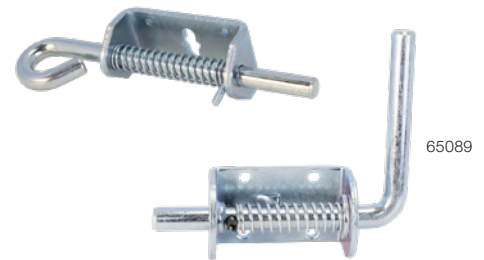
PART #	DESCRIPTION	PACKAGING
65088	Heavy Duty. Fits 7" to 11" Width Tires.	Double blister
65089	Super Heavy Duty. Fits 7" to 11" Width Tires.	Colour box
65090	Extreme Heavy Duty. Fits 13" to 16" Rims. Fits Tires up to 28". Diameter x 9" Width.	Colour box



Spring Latches

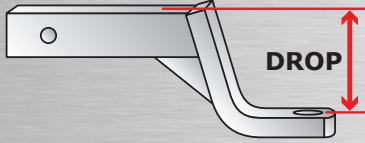
Spring loaded bolt can be locked in the open position. Zinc plated bolt housing and keeper. Turning lever allows the bolt to close under spring pressure.

PART #	PIN DIAMETER	HANDLE TYPE	BRACKET LENGTH	BRACKET WIDTH	OVERALL LENGTH	MOUNTING HOLE DIAMETER
23057	7/16"	Loop	3-3/8"	1-1/2"	7-1/4"	3/16"
23058	1/2"	4" L Shape	3-1/8"	1-3/4"	5-1/2"	1/4"



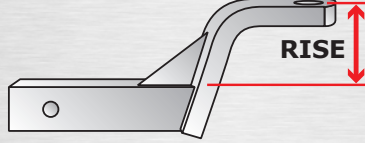


Ball Mount Measurements



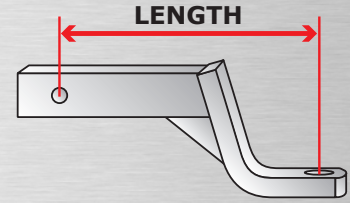
Drop

The distance from the top of the shank to the top of the ball platform



Rise

The distance from the top of the shank to the top of the ball platform



Length

The distance from the center of the ball hole to the center of the pinhole



Class 1 Ball Mounts

Robotic welded, solid shank. Fits 1-1/4" Class 1 receiver tubes. Black powder coated finish.

PART#	TW	GTW	HOLE	DROP	RISE	LENGTH
11670	200 lb	2,000 lb	3/4"	1-1/4"	5/8"	6-3/4"
11671	200 lb	2,000 lb	3/4"	2-3/4"	2-1/8"	7"
11672	200 lb	2,000 lb	3/4"	3-1/2"	3"	9-1/2"



Class 3-4 Ball Mounts

Robotic welded, hollow shank. Fits 2" receivers. Black powder coated & chrome finish.

PART#	CLASS	TW	GTW	HOLE	DROP	RISE	LENGTH
11600	3	500 lb	5,000 lb	1"	Straight	Straight	10-1/2"
11601	4	600 lb	6,000 lb	1"	2"	3/4"	9"
11602	4	600 lb	6,000 lb	1"	4"	3"	9-1/4"
11603	4	600 lb	6,000 lb	1"	6"	5"	11"



Class 4 Forged Steel Ball Mounts

Solid one piece, forged ball mount. Fits 2" receivers. Black powder coated finish.

PART#	TW	GTW	HOLE	DROP	RISE	LENGTH
11586	1,000 lb	10,000 lb	1-1/4"	2"	1"	8-3/8"
11587	1,000 lb	10,000 lb	1-1/4"	4"	3"	8-1/2"
11588	1,000 lb	10,000 lb	1-1/4"	6"	5"	11"





Class 5 Forged Steel Ball Mounts

Solid one piece forged ball mount. Fits 2" receivers. Black powder coated finish.

PART#	TW	GTW	HOLE	DROP	RISE	LENGTH
11686	1,200 lb	12,000 lb	1-1/4"	2"	1"	8-3/8"
11687	1,200 lb	12,000 lb	1-1/4"	4"	3"	8-1/2"
11688	1,200 lb	12,000 lb	1-1/4"	6"	5"	11"



Super Duty Steel Ball Mounts

Robotic welded, hollow shank. Fits 2-1/2" receivers. Black powder coated finish.

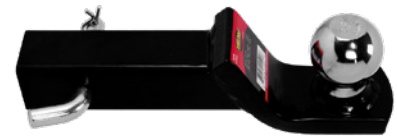
PART#	CLASS	TW	GTW	HOLE	DROP	RISE	LENGTH
11690	4	1,000 lb	10,000 lb	1-1/4"	3"	1-1/2"	9-3/4"
11691	4	1,000 lb	10,000 lb	1-1/4"	5"	3-1/2"	10"
11692	4	1,000 lb	10,000 lb	1-1/4"	8"	6-1/2"	10-1/2"



Ball Mount Kits

Includes ball mount, welded trailer ball and pull pin. Fits 2" receivers.

PART#	FINISH	CLASS	BALL	TW	GTW	DROP	RISE	LENGTH
11590	Black	4	1-7/8"	500 lb	5,000 lb	2"	1"	8-1/4"
11591	Black	4	2"	600 lb	6,000 lb	2"	1"	8-1/4"
11592	Black	4	2-5/16"	600 lb	6,000 lb	2"	1"	8-1/4"
11641	Chrome	4	2"	600 lb	6,000 lb	2"	1"	8-1/4"



Round Shank - Triple

Solid round shank with welded balls. Fits standard 2" square receivers. Black finish. No need to remove when changing - just pull the pin and turn!

PART#	CLASS	BALL	TW	GTW	DROP	RISE	LENGTH
11648	3-4	1-7/8"	350 lb	3500 lb	Straight	Straight	7-1/2"
		2"	600 lb	6,000 lb			
		2-5/16"	1000 lb	10,000 lb			



Square Drop Shank - Reversible

Drop solid shank with welded balls. Fits 2" receivers. Black finish.

PART#	CLASS	BALL	TW	GTW	DROP	RISE	LENGTH
11645	3	2"	600 lb	6000 lb	2"	3/4"	7-1/4"
		2-5/16"	1,000 lb	10,000 lb			

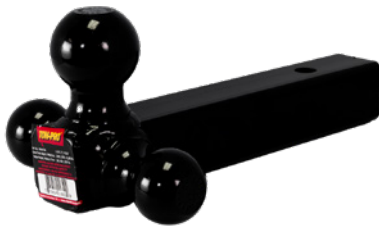




Square Straight Shank - Reversible

Straight solid shank with welded balls. Fits 2" receivers. Black finish.

PART #	CLASS	BALL	TW	GTW	LENGTH
11604	3-4	1-7/8"	350 lb	3500 lb	7-1/4"
		2"	600 lb	6,000 lb	
11605	3-4	2"	600 lb	6000 lb	7-1/4"
		2-5/16"	1,000 lb	10,000 lb	



Square Shank - Triple Ball

Square shank with welded balls. Fits 2" receivers, 5/8" hole size. Black finish.

PART #	DESCRIPTION	CLASS	BALL	TW	GTW	LENGTH
11607	Solid	3-4	1-7/8"	350 lb	3500 lb	8"
			2"	600 lb	6000 lb	8"
			2-5/16"	1,000 lb	10,000 lb	8"
11652	Hollow	3-4	1-7/8"	200 lb	2,000 lb	8"
			2"	600 lb	6,000 lb	8"
			2-5/16"	1,000 lb	10,000 lb	6-3/4"



Square Shank - Triple Ball with Tow Hook

Fits 2" receivers, 5/8" hole size. Hook load rating capacity 7,500 lbs. Black finish.

PART #	DESCRIPTION	CLASS	BALL	TW	GTW	LENGTH
11606	Solid Square Shank with Welded Balls & Tow Hook	3-4	1-7/8"	350 lb	3,500 lb	8"
			2"	600 lb	6,000 lb	8"
			2-5/16"	1,000 lb	10,000 lb	8"



Clevis Ball Mount

Hollow shank. Can be used as a standard ball mount. Black finish.

PART #	TW	GTW	TUBE	HOLE	LENGTH
11579	600 lb	6,000 lb	Straight	1"	10"



Shackle (Tow Strap) Ball Mount

For use with recovery straps on pickups and ATVs. Black powder coated finish with zinc plated shackle. Fits 2" receivers.

PART #	TW	GTW	OVERALL LENGTH	SHANK TYPE	SHACKLE DIAMETER
11693	600 lb	6,000 lb	9-3/8"	Hollow	5/8"
11694	1000 lb	10,000 lb	10"	Solid	3/4"





Adjustable Ball Mounts



Perfect for use on tow trailers of various coupler heights. Can be used in the rise or drop position as needed. Two pieces, comes with pull pins and clips.

Adjustable Aluminum Double Ball Mount

Made of aluminum. 2" aluminum shank, fits 2" receiver. Comes with two trailer balls. Chrome plated finish. Includes two 5/8" pin locks (with 2 keys)

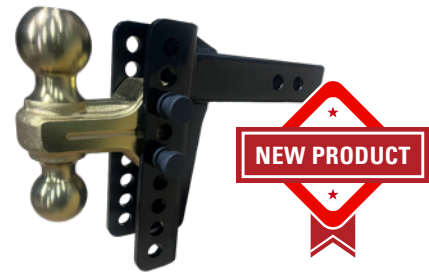
PART #	BALL	TW	GTW
11654	2"	800 lb	8,000 lb
	2-5/16"	1,000 lb	10,000 lb



Adjustable Double Forged Ball Mount

6" drop / 5-1/8" rise adjustable hitch with 2" shank (fits 2" receivers). Features a 2.5" channel with 9 vertical adjustment holes (1" spacing) and dual hitch pin positions for 10" or 11-1/2" shank length. Includes two forged trailer balls with durable yellow zinc-plated finish, plus two pins and clips.

PART #	BALL	TW	GTW
11656	2"	1,000 lb	10,000 lb
	2-5/16"	1,400 lb	14,000 lb



Adjustable Triple Ball Mount

Black powder coated finish. High grade solid steel for maximum strength. 3-pin design for easy adjustment (pins & clips included). Straight to 6-1/2" maximum drop/rise. 2" x 2" solid shank. Meets S.A.E. J684/V-5.

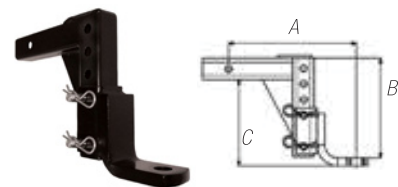
PART #	CLASS	BALL	TW	GTW
11650	3-4	1-7/8"	600 lb	6,000 lb
		2"	1,000 lb	10,000 lb
		2-5/16"	1,000 lb	10,000 lb



Adjustable Ball Mount

Black powder coated finish.

PART #	FINISH	TW	GTW	LENGTH (A)	DROP (B)	HEIGHT (C)
11561	Black	500 lb	5,000 lb	12-1/4"	5" - 9-1/2"	3-3/4" - 8-1/4"



Adjustable Ball Mount (Single Platform)

Black powder coated finish. Fits 2" receiver. Trailer hole size is 1". Pull pin & clip are included.

PART #	FINISH	CLASS	TW	GTW	LENGTH	ADJUSTMENT
11595	Black	3	600 lb	6,000 lb	12-1/2"	2" to 7-3/4" Drop, up to 6-1/2" Rise 1,000 lb





Trailer & Towing

Pintle Mounts • Hitch Adapters • Receiver Tubes



Trailer & Towing



Pintle Mounts

For 2" receivers. Converts receivers for use with pintle type trailers quickly and easily. Provides mounting for both ball and pintle hooks. Black powder coated finish.

PART #	DESCRIPTION	TW	GTW	# OF HOLES	POSITION (PAIRS)
11610	7-3/8" x 5"	2,800 lb	14,000 lb	8	4th
11630	12-1/2" x 5"	2,000 lb	10,000 lb	14	7th



Hitch Box Extension

Service step. 2" extension only.

PART #	DESCRIPTION	TW	GTW
11784	14" x 7" Stepping Area	400 lb	4,000 lb



Reducer Sleeve Set

Reduces a 3" receiver tube to accept 2-1/2" or 2" shanks. 5/8" hitch pin hole size.

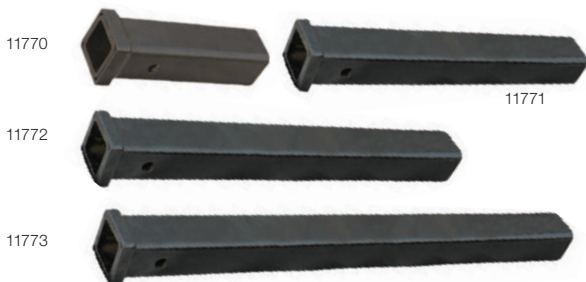
PART #	DESCRIPTION
11790	3" to 2-1/2" or 2". Black Powder Coated Finish. Carbon Steel Construction.



Hitch Adapters

Ideal for cargo carriers and bike carriers. Black powder coated finish. Not to be used for towing.

PART #	DESCRIPTION
11785	Decrease Receiver Opening from 2-1/2" to 2", 5/8" Pin, 5" in Length.
11786	Decrease Receiver Opening from 2" to 1-1/4", 5/8" Pin Hole, 3-1/2" Length.
11787	Increase Receiver Opening from 1-1/4" to 2", GTW 3500 lb
11788	Decrease Receiver Opening from 2" to 1-1/4", GTW 3500 lb
11789	8-1/2" Length, Fits 2" Receivers.



Receiver Tubes

Powder coated black finish. Welded. Fits 2" receivers.

PART #	LENGTH
11770	6"
11771	12"
11772	18"
11773	24"





RV Bumper Receiver Adapter 2"

Heavy duty adapter for 4x4 RV Bumper.

PART #	DESCRIPTION	TONGUE CAPACITY
11778	Black Power Coated Finish. Accepts 2" Cargo Carrier Tube.	200 lb



- ✓ This travel trailer accessory fits 4" - 4" square bumpers (can be mounted upside or down bumper beams)
- ✓ For mount 2" shank of bike racks, RV tire carriers, cargo carriers or other accessories, the bumper receiver allows 200lbs tongue weight capacity
- ✓ Made of solid steel construction with durable black powder coated finish
- ✓ The bumper adapter takes 4 bolts and secures tightly around the travel trailer bumper

Pintle Hooks

Solid forged steel construction. Black enamel painted finish. 4-1/4" x 3-1/4" base plate. All bolts are made from heat treated alloy steel.

PART #	CAPACITY	TW	GTW
11618	5 tons	2,000 lb	10,000 lb
11619	15 tons	6,000 lb	30,000 lb
11620	10 tons	4,000 lb	20,000 lb
11621	20 tons	9,000 lb	40,000 lb
11622	30 tons	14,000 lb	60,000 lb



Pintle Hooks - Solid Shank

Fits 2" receivers.

PART #	TW	HOOK CAPACITY
11718	2,000 lb	10,000 lb
11719	2,000 lb	20,000 lb
11720	2,000 lb	30,000 lb



Combination Pintle Hooks - Class 5

PART #	BALL SIZE	BALL CAPACITY	TW	GTW	REPLACEMENT BALL
11616	2"	7,000 lb	3,000 lb	16,000 lb	11632
11617	2-5/16"	14,000 lb	3,000 lb	16,000 lb	11633





Trailer & Towing

Pintle Hooks • Mounting Lunette Rings • Document Holders



Trailer & Towing



Combination Pintle Hooks Class 5 - 1 Piece, Solid Shank

Solid steel construction. Comes with lock pin on chain and 2" trailer ball. Fits 2" receivers.

PART #	BALL SIZE	BALL CAPACITY	TW	GTW	SHANK	REPLACEMENT BALL
11715	1-7/8"	2,000 lb	1,200 lb	12,000 lb	2"	11631
11716	2"	7,000 lb	1,200 lb	12,000 lb	2"	11632
11717	2-5/16"	12,000 lb	1,200 lb	12,000 lb	2"	11633



4-Hole Mounting Lunette Ring

Forged steel with black powder coated finish.

PART #	DESCRIPTION	TOW RATING
11636	2-1/2" Diameter Ring with Square 6" Base Plate, 5/8" Diameter Mounting Holes, 4,000 lb. Vertical Load.	42,000 lb



Mount Fixed Lunette Ring

Forged steel with black powder coated finish.

PART #	DESCRIPTION	TOW RATING
11634	2-1/2" Ring Diameter, 3-1/4" Shank Length, 1-1/2" Shank Diameter	15,000 lb



Adjustable 3-Position Lunette Ring

Forged steel with black powder coated finish.

PART #	DESCRIPTION	TOW RATING
11635	Forged Ring 6" Outside Diameter, 2-3/4" Inside Diameter, 4-3/8" Outside Bracket Width, 3-5/8" Inside Bracket Width, 1,800 lb. Vertical Load.	12,000 lb



Plastic Document Holders

Molded from high density polypropylene, weather and impact resistant. Protects documents from damage. Mounts onto machines for easy access. O-Ring sealed. Screw top lid.

PART #	DESCRIPTION
17710	Plastic Holder 2-1/4" Diameter x 12-1/2" Long
17720	Plastic Holder 2" Diameter x 12-1/2" Long
17730	Plastic Holder 3-1/4" Diameter x 14" Long
17731	Tether for Plastic Holder 17720 and 17730

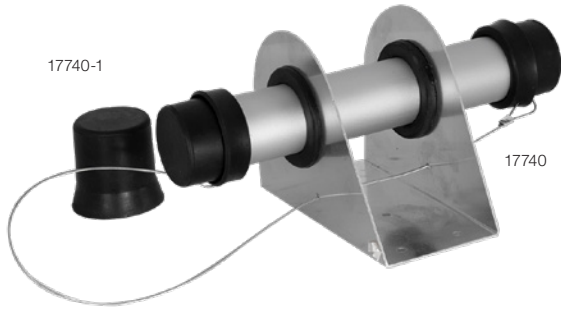
17730

17720

17710

17731

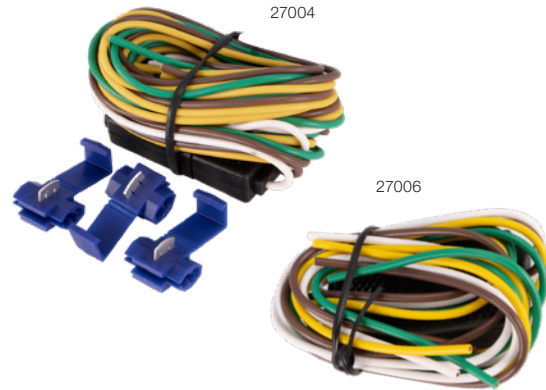




Aluminum Document Holder

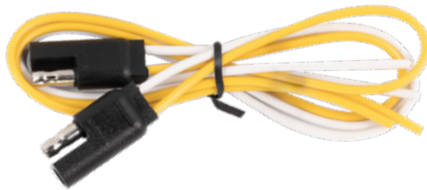
Made from corrosion resistant aluminum. Protects documents from the elements.

PART #	DESCRIPTION
17740	1.5" Inside Diameter x 9" Long
17740-1	Rubber Cap Replacement for 17740



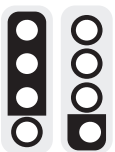
4 Pole Flat Connectors

PART #	DESCRIPTION
27004	4-Pole Flat Wiring Harness. 18 Gauge Wire - 12" Male, 48" Female, 18" Ground.
27006	4-Pole Flat Wiring Harness. 12" 18 Gauge Wire.
27008	4-Way Flat Wiring Harness. 25" 3-Wire Bonded Loop with Ground Wire. 18 ft Male End, 5 ft Female End. 5 ft Brown Extension Wire Included.



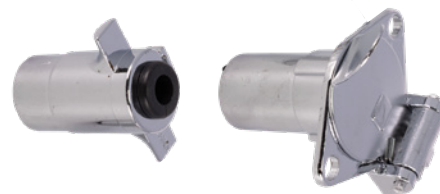
2 Way Flat Connector

PART #	DESCRIPTION
27002	2-Pole Flat Connectors. 12" 18 Gauge White & Yellow Wires.



4 Pole Flat Loop Trailer Connector HD

PART #	DESCRIPTION
27010	4-Pole Flat Loop. Heavy Duty. 48" 18 Gauge Wires.



4 Pole Round Plug & Socket

PART #	DESCRIPTION
27015	Die Cast, Chrome Plated Housing. Trailer and Vehicle Side.



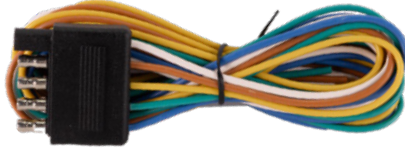
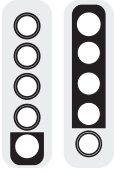


Trailer & Towing

Trailer Connectors



Trailer & Towing



5 Pole Flat Connectors

PART #	DESCRIPTION
27020	Male Connector Plug. Comes with 48" of 18" Gauge Wire.



Mounting Bracket For 7 Way Trailer Connectors

PART #	DESCRIPTION
27040	Zinc Plated.



7 Way Blade Plug

PART #	DESCRIPTION
27044	Zinc Plated Metal Housing. Trailer Side.



7 Way Socket

PART #	DESCRIPTION
27048	7-Way Blade Socket. Plastic Housing with Red Reflector. Vehicle Side.



6 Way Round Plug & Socket

PART #	DESCRIPTION
27034	6-Pole Round Socket with Cover, with Heavy Duty Die Cast Housing, Vehicle Side.
27036	6-Pole Round Plug. Heavy Duty Die Cast Housing, Trailer Side.



7 Way Socket

PART #	DESCRIPTION
27042	7-Way Blade Socket with Cover. Zinc Plated Metal Housing. Vehicle Side.



7 Way Plug and Socket

PART #	DESCRIPTION
27046	7-Way Blade with Cover, Abs Housing with Red Reflector. Trailer and Vehicle Side.



7 Way Plug

PART #	DESCRIPTION
27050	7-Way Blade Flat Plug. Plastic Housing. Trailer Side.



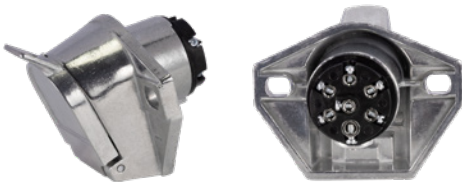
7 Way Socket / 4-Way Plug Set

PART #	DESCRIPTION
27052	7-Way Blade Socket with Cover. 4-Way Flat Plug & Direct Wiring. Vehicle Side.



7 Way Plug - Heavy Duty

PART #	DESCRIPTION
27060	7-Pole Round Plug. Heavy Duty Die Cast Housing. Trailer Side.



7 Way Socket - Heavy Duty

PART #	DESCRIPTION
27062	7 Pole Round Socket with Cover. Vehicle Side.



7 Way Plug

PART #	DESCRIPTION
27064	7-Pole Round Plug. Nylon With Fiberglass Housing. Trailer Side.



7 Way Socket

PART #	DESCRIPTION
27066	7-Pole Round Socket with Cover. Nylon with Fiberglass Housing. Vehicle Side.



27080



27082



27084



27088



4 Way Flat Tester With LEDs

PART #	DESCRIPTION
27092	4-Way Flat Tester with 3 LEDs Indicator and Ring.

Trailer Connector Adapters

PART #	DESCRIPTION
27080	7-Pole Round to 4-Way Flat.
27082	7-Way Blade to 6-Way Round. Center Pin Auxiliary.
27084	7-Way Blade to 4-Way Flat.
27088	7-Pole Blade Plug to 7-Pole Round Socket. Heavy Duty.





Trailer & Towing

Trailer Connectors • Swing Way Jacks



Trailer & Towing



7 Way Blade Tester with LEDs

PART #	DESCRIPTION
27096	7-Way Blade Tester with 6 LEDs Indicator.



Breakaway Switch with Lanyard

PART #	DESCRIPTION
27098	With 4 ft of 16 Gauge Wire. Metal Bracket Included.

“Swing-Way” Jacks with Caster Wheels

- ✓ Zinc plated finish
- ✓ Perfect for use on tow trailers of various coupler heights
- ✓ Heavy duty swivel mechanism swings and locks jack to transport position
- ✓ Pull-type locking pin secures jack into load-bearing position
- ✓ Supplied with bolt reinforced caster and mounting bracket
- ✓ Fits tongues up to 3" x 5"

All specifications for jacks are in accordance with the ASABE S 485 standards.



PART #	SUPPORT CAPACITY	MAX. LIFT CAPACITY	CASTER WHEEL	LIFT	BRACKET HEIGHT	RETRACTED HEIGHT	EXTENDED HEIGHT	COLOUR BOX
11466	1,600 lb	1,200 lb	6"	10"	12-3/4"	23-1/4"	33-1/4"	Yes
11477	2,000 lb	1,500 lb	8"	10"	12-3/4"	25-1/2"	35-1/2"	No

PART #	DESCRIPTION
11466-2	Replacement Wheel for 11466
11477-2	Replacement Wheel for 11477



11466-2



11477-2





Top Wind with Wheel

PART #	SUPPORT CAPACITY	MAX. LIFT CAPACITY	CASTER WHEEL	LIFT	BRACKET HEIGHT	RETRACTED HEIGHT	EXTENDED HEIGHT	HANDLE
11463	2,000 lb	1,200 lb	6"	15"	8-1/2"	20"	35"	Knob
No Caster	6,000 lb	5,000 lb						



PART #	DESCRIPTION
11467-1	Replacement Wheel & Bracket for 11467 & 11463.

Side Wind with Wheel

Non-removable handle.

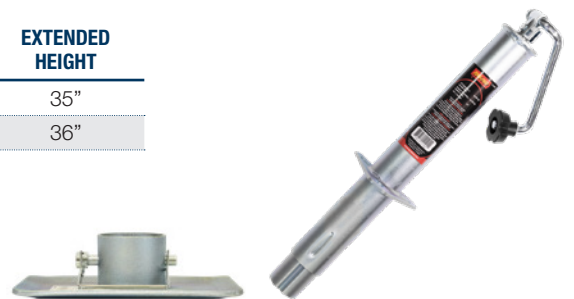
PART #	SUPPORT CAPACITY	MAX. LIFT CAPACITY	CASTER WHEEL	LIFT	BRACKET HEIGHT	RETRACTED HEIGHT	EXTENDED HEIGHT
11467	2,000 lb	1,200 lb	6"	15"	9-1/2"	23-1/2"	38-1/2"
No Caster	2,800 lb	2,000 lb					



PART #	DESCRIPTION
11467-1	Replacement Wheel & Bracket for 11467 & 11463.

Top Wind without Base or Wheel

PART #	SUPPORT CAPACITY	MAX. LIFT CAPACITY	LIFT	BRACKET HEIGHT	RETRACTED HEIGHT	EXTENDED HEIGHT
11492	6,000 lb	5,000 lb	15"	8-1/2"	20"	35"
11493	6,000 lb	5,000 lb	15"	10"	21"	36"



PART #	DESCRIPTION
11492-1	Base for 11492, 11493 and 11484 (4" x 7.5").

Side Wind without Wheel

PART #	SUPPORT CAPACITY	MAX. LIFT CAPACITY	LIFT	BRACKET HEIGHT	RETRACTED HEIGHT	EXTENDED HEIGHT
11484	2,800 lb	2,000 lb	15"	9"	24"	39"





Round Tube Mount Jacks, Top Wind

Robust internal gear mechanism and heavy duty rolled threads for smooth operation and dependability. 4-position external mounting tube, lock-pin and handle. Black enamel painted finish. Comes in colour box.

PART #	SUPPORT CAPACITY	MAX. LIFT CAPACITY	CASTER WHEEL	LIFT	BRACKET TYPE	RETRACTED HEIGHT	EXTENDED HEIGHT
11468	6,500 lb	5,000 lb	10"	10"	Pipe	15"	25"
11469	6,500 lb	5,000 lb	15"	15"	Pipe	20-1/4"	35-1/4"



Round Tube Swivel Bracket Mount Jacks, Top Wind

Robust internal gear mechanism and heavy duty rolled threads for smooth operation and dependability. 4-position mounting tube, lock-pin and handle. Black enamel painted finish.

PART #	SUPPORT CAPACITY	MAX. LIFT CAPACITY	LIFT	BRACKET HEIGHT	BRACKET TYPE	RETRACTED HEIGHT	EXTENDED HEIGHT
11470	2,800 lb	2,000 lb	10"	8-1/2"	Flange	15"	25"
11471	2,800 lb	2,000 lb	15"	13-1/4"	Flange	20"	35"



Side Wind, Round Tube Mount (7-1/2" x 4" Base Plate)

Robust internal gear mechanism and heavy duty rolled threads for smooth operation and dependability. 4-position external mounting tube, lock-pin and handle. Black enamel painted finish. Comes in colour box.

PART #	SUPPORT CAPACITY	MAX. LIFT CAPACITY	LIFT	BRACKET HEIGHT	BRACKET TYPE	RETRACTED HEIGHT	EXTENDED HEIGHT
11472	6,500 lb	5,000 lb	15"	14"	Pipe	22"	37"
11473	6,500 lb	5,000 lb	10"	9"	Pipe	16-1/2"	26-1/2"



Side Wind, Round Tube Mount (8" x 6" Base Plate)

Robust internal gear mechanism and heavy duty rolled threads for smooth operation and dependability. 4-position external mounting tube, lock-pin and handle. Black enamel painted finish.

PART #	SUPPORT CAPACITY	MAX. LIFT CAPACITY	LIFT	BRACKET HEIGHT	BRACKET TYPE	RETRACTED HEIGHT	EXTENDED HEIGHT
11474	8,400 lb	7,000 lb	10"	9"	Pipe	17"	27"
11475	8,400 lb	7,000 lb	15"	14-1/4"	Pipe	22-1/2"	37-1/2"
11479	6,500 lb	5,000 lb	15"	15"	Pipe	22-1/2"	37-1/2"





Top Wind, Square Tube Mount

Robust internal gear mechanism & heavy duty rolled threads for smooth operation. Equipped with removable cover, grease fittings, 4-position external mounting tube and lock-pin. Black enamel painted finish.

PART #	SUPPORT CAPACITY	MAX. LIFT CAPACITY	LIFT	BRACKET HEIGHT	BRACKET TYPE	RETRACTED HEIGHT	EXTENDED HEIGHT
11520	2,800 lb	2,000 lb	10"	10"	Pipe	19"	29"
11525	2,800 lb	2,000 lb	15"	10"	Pipe	23"	38"
11535	6,000 lb	5,000 lb	15"	15-3/4"	Pipe	22"	37"

11520



Side Wind, Square Tube Mount

Robust internal gear mechanism & heavy duty rolled threads for smooth operation. Equipped with grease fittings, 4-position mounting tube and lock-pin. Black enamel painted finish.

PART #	SUPPORT CAPACITY	MAX. LIFT CAPACITY	LIFT	BRACKET HEIGHT	BRACKET TYPE	RETRACTED HEIGHT	EXTENDED HEIGHT
11510	2,800 lb	2,000 lb	10"	9"	Pipe	19-1/2"	29-1/2"
11515	2,800 lb	2,000 lb	15"	15"	Pipe	23-1/2"	38-1/2"
11540	6,500 lb	6,000 lb	10"	9"	Pipe	17"	27"

11510



Square Tube Trailer Jack

Robust 2-1/2" square tube. Drop leg adjusts 13" in addition to lift. Features grease fitting for lubrication of mechanism. Black enamel painted finish.

PART #	SUPPORT CAPACITY	MAX. LIFT CAPACITY	TYPE	LIFT	TOTAL TRAVEL	RETRACTED HEIGHT	EXTENDED HEIGHT
11545	6,500 lb	6,000 lb	Side Wind	16"+13"	31"	24-1/2"	53-1/2"



Square Tube "Drop Legs" Jack

Robust 2-1/2" square tube "weld-on" construction. Drop leg adjusts 13" in addition to lift. Features grease fitting for lubrication of mechanism. Black enamel painted finish.

PART #	SUPPORT CAPACITY	MAX. LIFT CAPACITY	TYPE	LIFT	TOTAL TRAVEL	RETRACTED HEIGHT	EXTENDED HEIGHT
11487	8,000 lb	7,000 lb	Top Wind	15" + 13"	28"	22"	50"
11488	8,000 lb	7,000 lb	Side Wind	15" + 13"	28"	24-1/2"	52-1/2"

11487





Trailer & Towing

Scissor Jacks • Square Tube Jacks • Jack Replacement Parts



Trailer & Towing



Square Tube "Drop Legs" Jack - Heavy Duty

Heavy duty 4" square tube "weld-on" construction. Drop leg has 5 position holes and adjusts 13" in addition to lift. Features grease fittings for lubrication of mechanism. Black finish. 12-1/2" lift.

PART #	SUPPORT CAPACITY	MAX. LIFT CAPACITY	TYPE	TOTAL TRAVEL	DROP LEG PIN LOCATION	RETRACT. HEIGHT	EXT. HEIGHT
11490	12,000 lb	10,000 lb	Single Speed	25-1/2"	Side	28-1/2"	54"

Levelling Scissor Jack

Used for stabilizing and levelling 5th wheels and travel trailers. Sturdy steel construction. Designed for today's larger and heavier units. Black finish. Permanently mounted and conveniently concealed when not in use. Easy to install. Comes with wrench.



PART #	SUPPORT CAPACITY	MAX. LIFT CAPACITY
11891	5,000 lb	4" to 24"

Jack Replacement Parts And Accessories

11450, 11451, 11505	11452	11491
11509	11454	11455
11500, 11501, 11513	11502, 11487-1	11477-1
11466-2	11467-1	11477-2
11492-1	11891-1	11545-1

PART #	DESCRIPTION
11450	Side Wind Handle for 11484/11467
11451	Side Wind Handle for 11510/11515
11452	Side Wind Handle for 11472/11473/11479
11505	Side Wind Handle for 11475/11474/11488/11545/11540
11491	Side Wind Jack Handle for 11490 Jack
11509	Bushing for Jack Handle Side Wind
11454	Quick Release Pin for Jacks 9/16 Diameter x 2-1/2 Usable Length. For 11510/11515/11520/11525
11455	Quick Release Pin for Jacks 5/8 Diameter x 3-1/4 Usable Length. For 11545, 11535, 11540, 11468, 11469, 11472, 11473, 11474, 11475, 11479
11500	Mounting Tube External - Large (3" O.D./2.6" I.D.)
11501	Mounting Tube Internal - Small (2" O.D./2.6" I.D.)
11513	Weld-On Mounting Bracket
11502	Top Wind Jacks Handle (Except 11487)
11487-1	Top Wind Jacks Handle for 11487
11466-2	Wheel Replacement 6" for 11466 Jack
11467-1	Replacement Wheel & Bracket for Jack 11467 & 11463
11477-2	Wheel Replacement 8" for 11477 Jack
11477-1	Plastic Cap for 11477 & 11466 Swing-Way Jacks
11492-1	Small Jack Base 4" x 7-1/2" for 11492, 11493 & 11484
11891-1	Replacement Handle for 11891
11545-1	Square Quick Pin for 11545 Base





Scissor Jack Drill Adapter

Reduces time and effort to raise or lower scissor jacks

PART #	SUPPORT CAPACITY	MAX. LIFT CAPACITY
11892	Zinc Plated Finish	3/8" - 1/2"



Heavy Duty Polyfoam Wheel Chock

This wheel chock is made of structural polyurethane foam. It is stronger, more durable, extremely light weight, odourless and resistant to oil and chemicals. It is bright orange in colour for increased visibility. Featuring a molded carry handle for easy carrying and positioning.

PART #	SIZE	TIRE DIAMETER	MAX. VEHICLE WEIGHT
11987	9-3/8" x 8" x 5-1/2"	30" - 40"	44,000 lb



Wheel Chocks

Rubber wheel chock for trailers, cars or other small vehicles. Non-slip surface provides superior traction.

PART #	SIZE	TIRE DIAMETER	MAX. VEHICLE WEIGHT
11984	8" x 6" x 4"	20" - 26"	8,800 lb
11985	10-5/8" x 7" x 4-1/2"	24" - 30"	17,600 lb



Wheel Chocks

Made from rubber compound with reinforced nylon fiber. Ideal for trailers and heavy loaded vehicles. Eyebolt for easy handling. To be used for vehicles under 20T.

PART #	SIZE	TIRE DIAMETER	MAX. VEHICLE WEIGHT
11986	8" x 6" x 10"	27" - 40"	44,000 lb





Mud Flaps

Sold separately. Each made of heavy, natural, & synthetic rubber. Hardness: 65-75 Shore A Units.

PART #	SIZE	THICKNESS	MOUNTING HEAD
11981	24" x 24"	1/4"	5/16"
11982	24" x 30"	1/4"	5/16"
11991	24" x 24"	3/8"	7/16"
11992	24" x 30"	7/16"	7/16"
11993	24" x 36"	7/16"	7/16"



Trailer Hitch Cover

Protects receiver tube from elements and debris. Includes rubber strap that can be fixed to receiver to prevent it from being lost.

PART #	FIT
11792	1-1/4" Receivers
11793	2" Receivers



Trailer Dolly

Robust steel construction with black powder coated finish. Rust and corrosion resistant. Features rubberized grip T-handle and 10" pneumatic wheels.

PART #	TRAILER BALL	TONGUE WEIGHT CAPACITY
11795	1-7/8"	600 lb

